



REGIONAL SPECIALISED METEOROLOGICAL CENTRE-TROPICAL CYCLONES, NEW DELHI
TROPICAL WEATHER OUTLOOK

DEMS-RSMC TROPICALCYCLONES NEW DELHI DATED 19.09.2022

TROPICAL WEATHER OUTLOOK FOR NORTH INDIAN OCEAN (THEBAY OF BENGAL OF BENGAL AND ARABIAN SEA) VALID FOR NEXT 120 HOURS ISSUED AT 0600 UTC OF 19.09.2022 BASED ON 0300 UTC OF 19.09.2022.

BAY OF BENGAL:

UNDER THE INFLUENCE OF THE CYCLONIC CIRCULATION OVER NORTH & ADJOINING CENTRAL BAY OF BENGAL (BOB), A LOW PRESSURE AREA FORMED OVER THE SAME REGION AT 0300 UTC OF 19TH SEPTEMBER, 2022. IT IS VERY LIKELY TO MOVE NORTHWESTWARDS TOWARDS ODISHA COAST AND BECOME MORE MARKED DURING NEXT 24 HOURS.

AS PER INSAT 3D IMAGERY AT 0300 UTC, LOW LEVEL CIRCULATION LAY OVER NORTHWEST & ADJOINING WESTCENTRAL BOB. SCATTERED TO BROKEN LOW AND MEDIUM CLOUDS WITH EMBEDDED INTENSE TO VERY INTENSE CONVECTION LAY OVER COASTAL ODISHA, NORTHWEST & ADJOINING WESTCENTRAL BOB. MINIMUM CLOUD TOP TEMPERATURE IS - 85 DEGREE CELSIUS.

SCATTERED TO BROKEN LOW AND MEDIUM CLOUDS WITH EMBEDDED INTENSE TO VERY INTENSE CONVECTION LAY OVER CENTRAL & ADJOINING NORTH BAY OF BENGAL. SCATTERED LOW AND MEDIUM CLOUDS WITH EMBEDDED MODERATE TO INTENSE CONVECTION LAY OVER REST OF BAY OF BENGAL, ANDAMAN SEA, GULF OF MARTABAN ARAKAN COAST AND TENASSERIM COAST.

PROBABILITY OF CYCLOGENESIS (FORMATION OF DEPRESSION) DURING NEXT 120 HRS:

24 HOURS	24-48 HOURS	48-72 HOURS	72-96 HOURS	96-120 HOURS
NIL	LOW	NIL	NIL	NIL

ARABIAN SEA:

SCATTERED LOW AND MEDIUM CLOUDS WITH EMBEDDED ISOLATED WEAK TO MODERATE CONVECTION LAY OVER EASTCENTRAL & SOUTHEAST ARABIAN SEA.

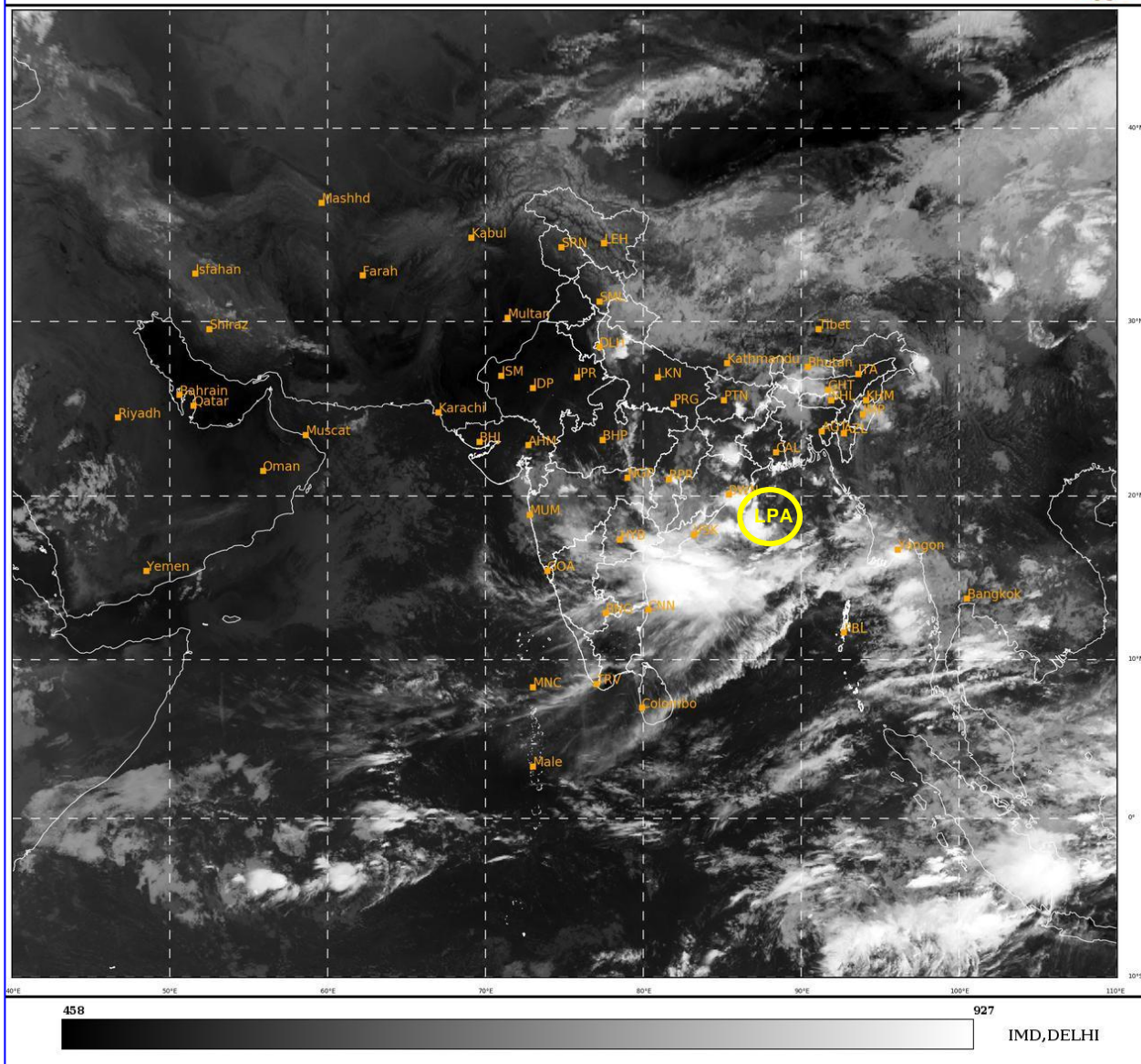
PROBABILITY OF CYCLOGENESIS (FORMATION OF DEPRESSION) DURING NEXT 120 HRS:

24 HOURS	24-48 HOURS	48-72 HOURS	72-96 HOURS	96-120 HOURS
NIL	NIL	NIL	NIL	NIL

Remarks: NIL

SAT : INSAT-3D IMG
IMG_TIR1 10.8 um
L1C Mercator

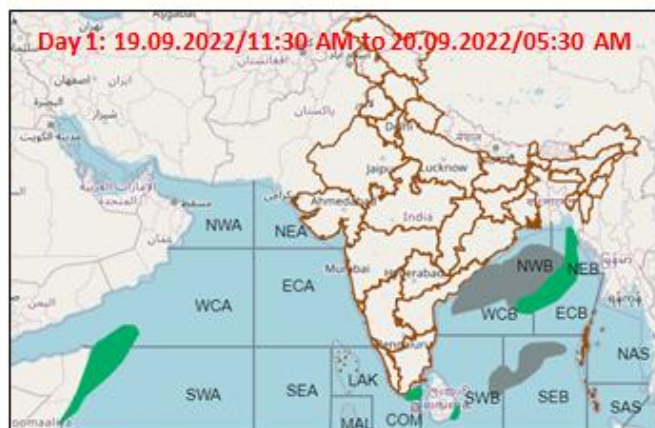
19-09-2022/(0300 to 0326) GMT
19-09-2022/(0830 to 0856) IST



LPA: LOW PRESSURE AREA

Cloud distribution: (a) Isolated: <25%, Scattered:25-50%, Broken: 51-75%, Solid:>75%, Convection Intensity: (a) Weak: Cloud Top Temperature (CTT) >-25°C, (b) Moderate: CTT: - 25°C to -40°C, (c) Intense: CTT: - 41°C to -70°C and (d) Very Intense: : Less than -70°C
PROBABILITY OF CYCLOGENESIS (FORMATION OF DEPRESSION):NIL: 0%, LOW: 1-33%, , MODERATE: 34-66% AND HIGH: 67-100%
This is a guidance Bulletin for WMO/ESCAP Panel Member countries. Visit respective National websites for Country specific Bulletins

Fishermen warning graphics



Squally WX with wind speed 40-45 kmph gusting to 55 kmph
Squally wind speed 45-55 kmph gusting to 65 kmph

Fishermen are advised not to venture into these marked areas.

Probability of exceedance of maximum sustained winds ≥ 45 kmph



	Probability of exceedance
	Low (1-33%)
	Moderate (34-67%)
	High (68-100%)